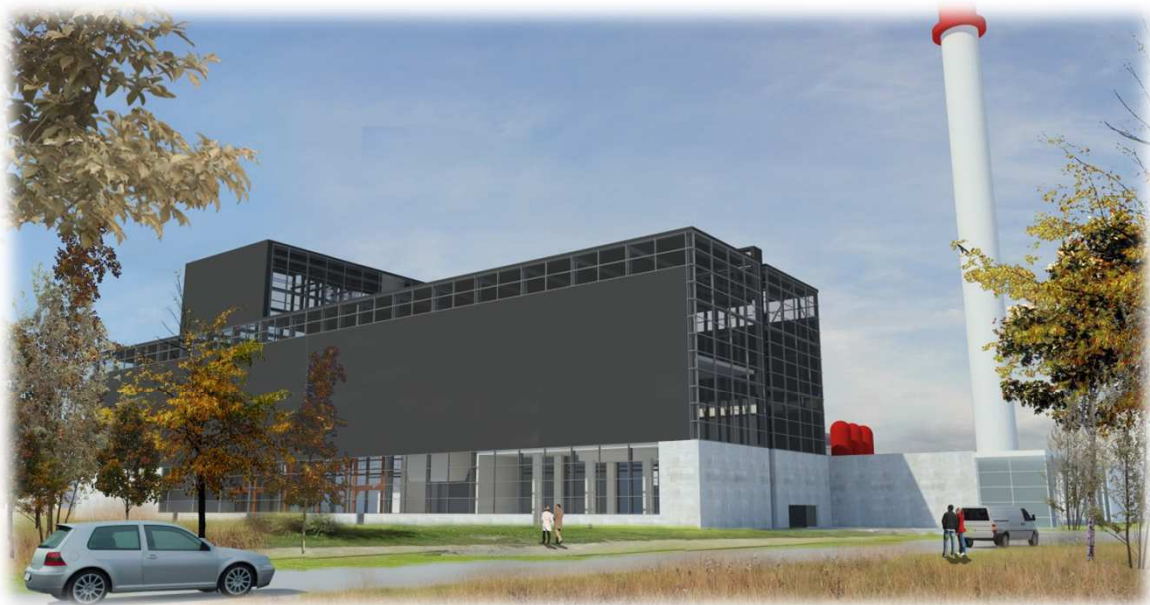


# I/S NORDFORBRÆNDING – WtE Plant Hørsholm - Denmark



## SECOLAB® Flue Gas Condensation and Heat Pumps

Incineration:	Waste
Installation:	New line L5
Capacity:	1 x 10 t/h

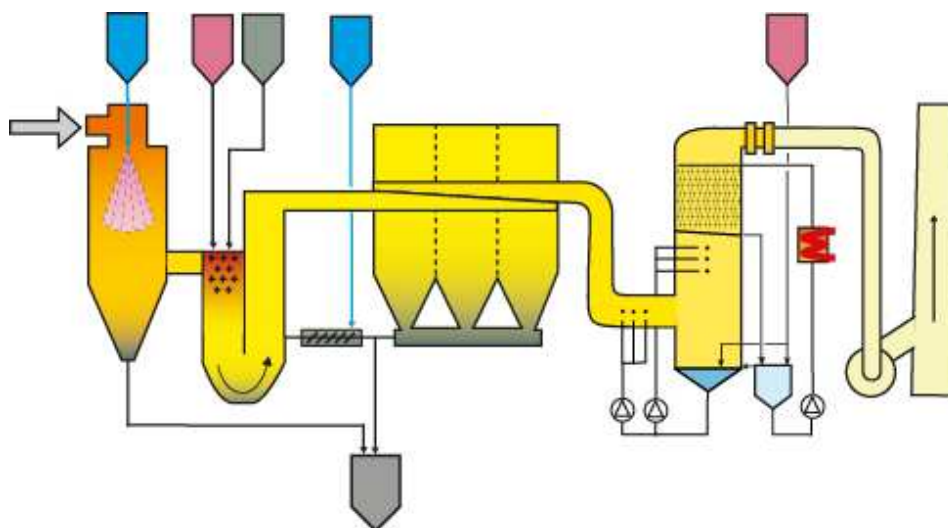
Upstream Components: Grate, SNCR, steam boiler

# I/S NORFORBRÆNDING - WtE Plant

Hørsholm - Denmark



## TECHNOLOGY



## SecoLAB® - Flue Gas condensation

## PERFORMANCE

Raw Gas / Guarantee		
Volume flow	75.000 Nm <sup>3</sup> /h wet	
Temperature at FGC inlet	160°C	
Dust	1600	3
HCl	700	3
SO <sub>2</sub>	300	8
HF	10	0,3
Heavy metals	10	0,2
Cd + Tl	1	0,02
Hg	0,15	0,02
Dioxins / Furans	2	0,05

### Flue Gas Cleaning Technology:

- Flue Gas cooling in conditioning tower
- SecoLAB® dry process for acid gases neutralisation and heavy metals / dioxins treatment
- Flue Gas condensation in GraniLAB® scrubber
- Compressor heat pumps
- Condensate treatment

All Pollutants in mg/Nm<sup>3</sup>, dry gas, corrected at 11 Vol.% O<sub>2</sub> except Dioxins in ng/Nm<sup>3</sup>

## FEATURES



- Hydrated Lime and activated carbon injection in SecoLAB®
- Caustic soda injection in GraniLAB®
- Prepared for more stringent Emission Limits in future
- High heat recovery thanks to compressor heat pumps

Rev. 11/14