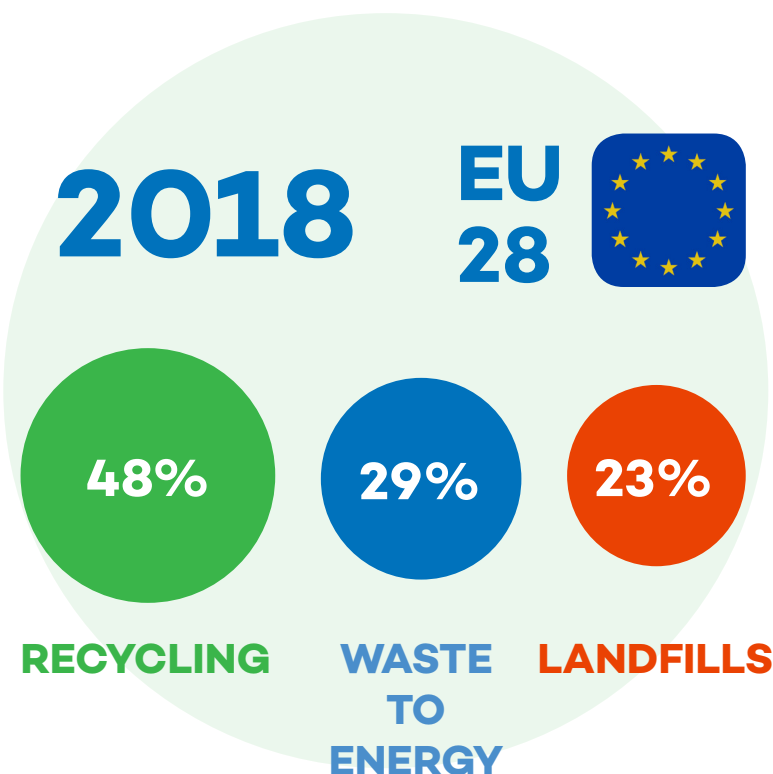
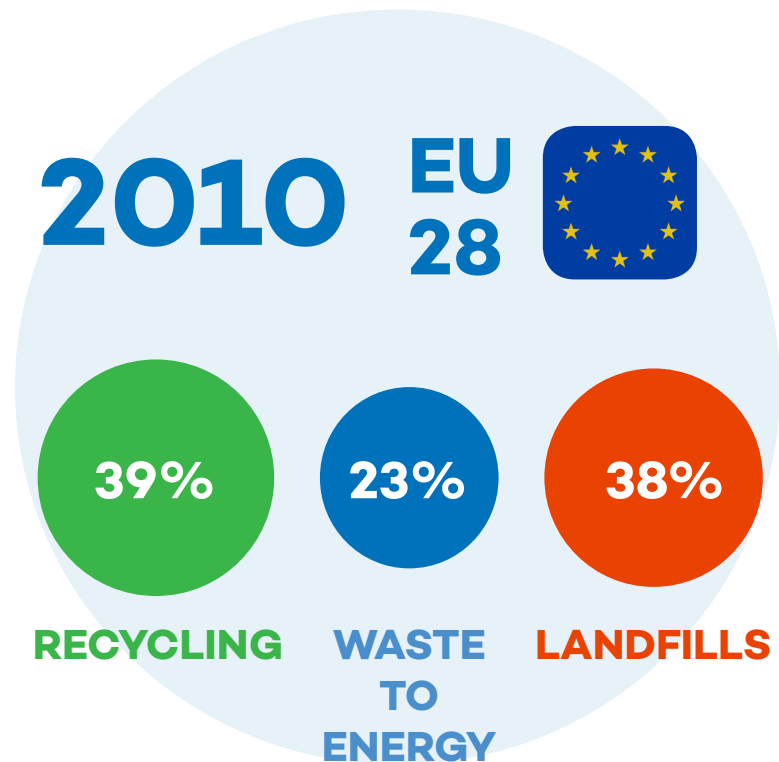


Municipal Waste

Treatment in the EU

Eurostat data show that **recycling** and **waste-to-energy** are growing hand-in-hand in the EU.

Countries performing well with **recycling** prefer to send their non-recyclable waste to **waste-to-energy**.



Unfortunately, almost half of the EU member states still send to **landfills** more than 40% of their municipal waste.

Methane emissions by landfills are 86 times more potent than CO₂ over a 20-year period!

Municipal Waste

Treatment in the EU

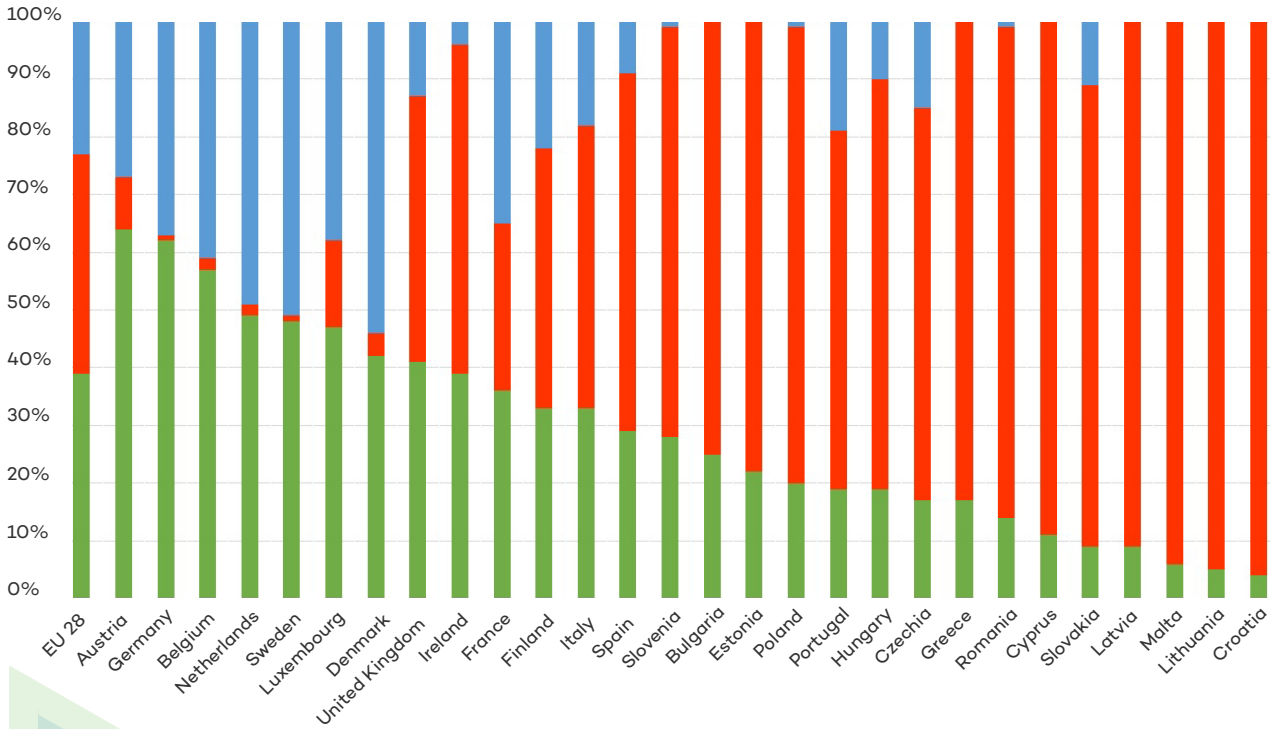
2010

EU-28:

39%
Recycling

23%
Waste-to-Energy

38%
Landfills



2018

EU-28:

48%
Recycling

29%
Waste-to-Energy

23%
Landfills

